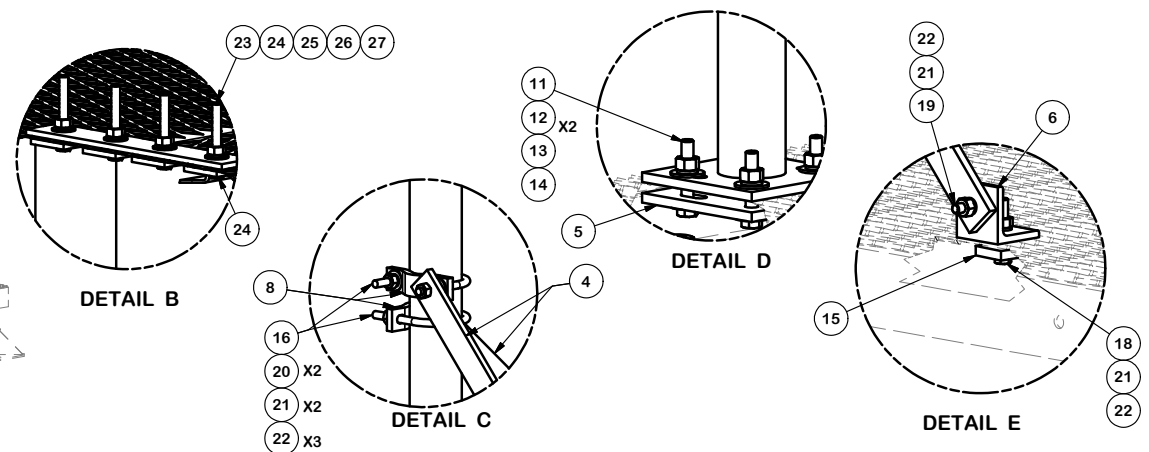


PARTS LIST					
ITEM	QTY	PART NO.	PART DESCRIPTION	LENGTH	UNIT WT. NET WT.
1	3	X-MPOST	SUPPORT POST FOR EQUIPMENT PLATFORM ICE BRIDGE KITS		92.99 278.98
2	2	GRS24	24" X 10" GRIP SPAN BRIDGE CHANNEL		67.98 135.95
3	3	HHD24	24" UNIVERSAL CANTILEVER		14.10 42.30
4	6	X-232698	TRPD-HD SUPPORT PLATE - SITE PRO 1	29 1/2 in	8.72 52.33
5	3	X-MPBP	BACKING PLATE FOR X-MPOST	8 in	8.48 25.43
6	6	SHCM-T	CHAIN MOUNT TIGHTENER BRACKET	3 in	1.84 11.05
7	2	X-WGB-SP	STRAIGHT ICE BRIDGE SPLICE	12 in	1.68 3.36
8	6	SCP	CLAMP HALF, 1/2" x 5-3/4"		1.29 7.76
9	3	PC312	3-1/2" FENCE POST CAP		0.59 1.76
10	6	SPLICE	SPLICE FOR GRIP STRUT	7 3/8 in	0.53 3.18
11	12	G58312	5/8" x 3-1/2" HDG HEX BOLT GR5		0.40 4.80
12	24	G58FW	5/8" HDG USS FLATWASHER	1/8 in	0.07 1.69
13	12	G58LW	5/8" HDG LOCKWASHER		0.03 0.31
14	12	G58NUT	5/8" HDG HEAVY 2H HEX NUT		0.13 1.56
15	6	X-124312	1/2" X 2" X 2" ANGLE SPACER; WITH 9/16" HOLE	2 in	0.53 3.20
16	12	X-UB1358	1/2" X 3-5/8" X 5-1/2" X 3" GALV U-BOLT		0.77 9.27
18	6	G1203	1/2" x 3" HDG HEX BOLT GR5 FULL THREAD	3 in	0.22 1.30
19	6	G1202	1/2" x 2" HDG HEX BOLT GR5	2 in	0.18 1.05
20	24	G12FW	1/2" HDG USS FLATWASHER	3/32 in	0.03 0.82
21	36	G12LW	1/2" HDG LOCKWASHER	1/8 in	0.01 0.50
22	42	G12NUT	1/2" HDG HEAVY 2H HEX NUT		0.07 3.01
23	20	G3803	3/8" x 3" HDG HEX BOLT GR5		0.12 2.42
24	8	SQW38	3/8" SQUARE WASHER (GALV.)	2 in	0.27 2.18
25	32	G38FW	3/8" HDG USS FLATWASHER		0.01 0.38
26	20	G38LW	3/8" HDG LOCKWASHER		0.01 0.13
27	20	G38NUT	3/8" HDG HEAVY 2H HEX NUT		0.03 0.68
				TOTAL WT. #	595.39



TOLERANCE NOTES

TOLERANCES ON DIMENSIONS, UNLESS OTHERWISE NOTED ARE:
 SAWED, SHEARED AND GAS CUT EDGES ($\pm 0.030"$)
 DRILLED AND GAS CUT HOLES ($\pm 0.030"$) - NO CONING OF HOLES
 LASER CUT EDGES AND HOLES ($\pm 0.010"$) - NO CONING OF HOLES
 BENDS ARE $\pm 1/2$ DEGREE
 ALL OTHER MACHINING ($\pm 0.030"$)
 ALL OTHER ASSEMBLY ($\pm 0.060"$)

PROPRIETARY NOTE:
 THE DATA AND TECHNIQUES CONTAINED IN THIS DRAWING ARE PROPRIETARY INFORMATION OF VALMONT INDUSTRIES AND CONSIDERED A TRADE SECRET. ANY USE OR DISCLOSURE WITHOUT THE CONSENT OF VALMONT INDUSTRIES IS STRICTLY PROHIBITED.

DESCRIPTION
 90 DEGREE 24" X 10' ICE BRIDGES
 FOR MODULAR PLATFORM
 PIPE LEGS

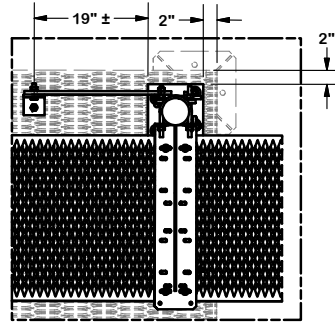
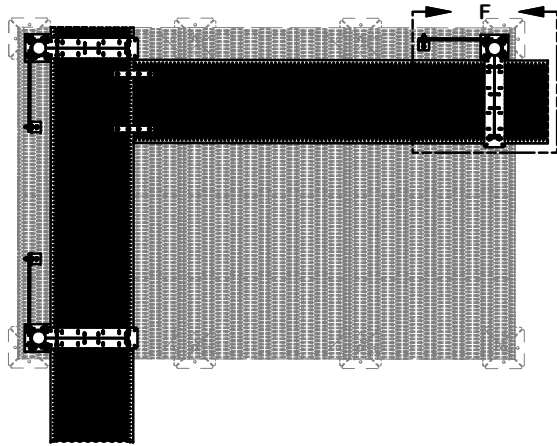
CPD NO.	DRAWN BY	ENG. APPROVAL
	CEK 6/23/2016	
CLASS	DRAWING USAGE	CHECKED BY
81	CUSTOMER	BMC 7/15/2016



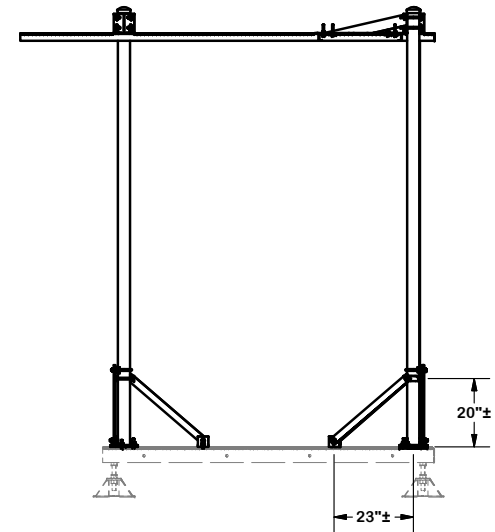
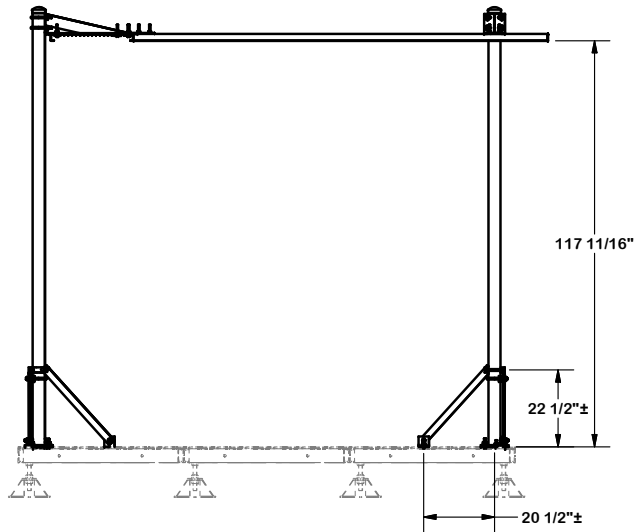
Engineering
 Support Team:
 1-888-753-7446

Locations:
 New York, NY
 Atlanta, GA
 Los Angeles, CA
 Plymouth, IN
 Salem, OR
 Dallas, TX

PART NO.	MIBP-2410L
DWG. NO.	MIBP-2410L



DETAIL F



TOLERANCE NOTES

TOLERANCES ON DIMENSIONS, UNLESS OTHERWISE NOTED ARE:
 SAWED, SHEARED AND GAS CUT EDGES ($\pm 0.030"$)
 DRILLED AND GAS CUT HOLES ($\pm 0.030"$) - NO CONING OF HOLES
 LASER CUT EDGES AND HOLES ($\pm 0.010"$) - NO CONING OF HOLES
 BENDS ARE $\pm 1/2$ DEGREE
 ALL OTHER MACHINING ($\pm 0.030"$)
 ALL OTHER ASSEMBLY ($\pm 0.060"$)

PROPRIETARY NOTE:
 THE DATA AND TECHNIQUES CONTAINED IN THIS DRAWING ARE PROPRIETARY INFORMATION OF VALMONT INDUSTRIES AND CONSIDERED A TRADE SECRET. ANY USE OR DISCLOSURE WITHOUT THE CONSENT OF VALMONT INDUSTRIES IS STRICTLY PROHIBITED.

DESCRIPTION

90 DEGREE 24" X 10' ICE BRIDGES
 FOR MODULAR PLATFORM
 PIPE LEGS

CPD NO.

DRAWN BY

ENG. APPROVAL

CLASS

SUB

DRAWING USAGE

CHECKED BY

PART NO.

MIBP-2410L

DWG. NO.

MIBP-2410L



Engineering
 Support Team:
 1-888-753-7446

Locations:
 New York, NY
 Atlanta, GA
 Los Angeles, CA
 Plymouth, IN
 Salem, OR
 Dallas, TX